

Historic, Archive Document

Do not assume content reflects current scientific knowledge, policies, or practices.

62.49

Fall 1950 Planting Bulletin

LIBRARY RECEIVED
★ SEP 29 1950
U. S. Department of Agriculture

KANSAS LANDSCAPE & NURSERY CO

1416 EAST IRON

SALINA, KANSAS

What should we plant in the fall?

In this bulletin are listed the items that are best planted in the fall as well as those that may be planted in either the fall or the spring.

The Dutch Bulbs must be planted in the fall. Fall planting, of course, is necessary for the bulbs to develop and to bloom during the following spring.

Almost all perennial flowering plants can be planted in the fall season. The early spring flowering perennials are best planted in the fall to insure an early spring bloom. The only exceptions to planting perennials in the fall are the fall blooming perennials, such as: Hardy Asters and Chrysanthemums. These must be planted in the spring so as to bloom the following fall.

Evergreens and Broad-leaved Evergreens are planted either in the Fall or the Spring. In the fall, they are planted beginning about September 15th. In the Great Plains Region, we do not recommend the planting of Spruce in the fall. Deciduous trees and shrubs cannot be dug and transplanted until we have had enough frosts or freezing weather for the leaves to fall and the plants to become dormant. This depends upon the season, but normally occurs in November. Almost all shade and ornamental trees and shrubs may be planted in the fall; however, there are a few exceptions: Weeping Willows, Lombardy Poplars, and certain shrubs are best planted in the spring; consequently, we do not list them in our fall planting bulletin. Dormant Roses, of course are not planted in the fall, but for your convenience, we have potted nearly every variety we list in the spring in special removable containers so that they can be planted now or anytime.

EVERGREENS for fall planting

UPRIGHT JUNIPERS

REDCEDAR The Redcedar is one of the most useful and the hardiest of the evergreens for the Great Plains Region. It has a fine textured foliage of a bright green color which turns reddish bronze in the winter. Redcedar may be kept small or any desired size or shape by shearing which makes them more dense and compact. Sheared specimens are used extensively as accent points in foundation plantings and landscapes.

2 to 2½ feet....\$3.75 3½ to 4 feet....\$5.50
2½ to 3 feet....\$4.25 4 to 4½ feet....\$6.50
3 to 3½ feet....\$4.75 4½ to 5 feet....\$7.50

RICHMOND PYRAMIDAL JUNIPER A new columnar type of Juniper needing very little trimming to keep it in form. Deep green color which holds well over winter. Is a fast grower and is best used at house corners or in front of rather high wall panels and for border screens. Gives a quick effect. Very hardy.

5 to 5½ feet....\$21.00 5½ to 6 feet....\$24.00

HILLS DUNDEE JUNIPER A very compact, symmetrical, pyramidal evergreen with beautiful, bluish-green finely textured foliage. Winter color is in an attractive purplish-plum shade.

2 to 2½ feet....\$7.00 2½ to 3 feet....\$8.50
3 to 3½ feet....\$10.00

CANNART JUNIPER One of the choice upright Junipers. Its rich textured foliage is a beautiful deep, dark green color which does not turn so bronze in the winter as other Junipers. It often bears silvery-colored "Juniper Berries" which are in striking contrast to the deep green foliage. Extremely hardy.

2 to 2½ feet....\$7.00
2½ to 3 feet....\$8.50
3 to 3½ feet....\$10.00
3½ to 4 feet....\$12.00
4 to 4½ feet....\$15.00
4½ to 5 feet....\$18.00
5 to 5½ feet....\$21.00

HILLSPIRE JUNIPER A new pyramidal variety with attractive, heavy, dark green whipcord foliage. Holds its color well during the winter.

2 to 2½ feet....\$7.00 2½ to 3 feet....\$8.50
3 to 3½ feet....\$10.00

KETELEER JUNIPER A broad pyramid in habit of growth with ascending branches. The scale-like foliage is rather loosely arranged on the branches and is of a bright green color. Recommended for the north side of buildings.

2 to 2½ feet....\$7.00 3½ to 4 feet....\$12.00
2½ to 3 feet....\$8.50 4 to 4½ feet....\$15.00
3 to 3½ feet....\$10.00 4½ to 5 feet....\$18.00

CHANDLERS SILVER JUNIPER One of the finest upright pyramidal evergreens. Beautiful silvery-green foliage of fine feathery texture. This is an extremely hardy and outstanding tree.

2 to 2½ feet....\$7.00 2½ to 3 feet....\$8.50
3 to 3½ feet....\$10.00

GREEN SCOPULORUM JUNIPER This novelty has the usual fine textured Scopulorum foliage but instead of the usual silvery color, the color is an attractive light bright green.

2 to 2½ feet....\$7.00 2½ to 3 feet....\$8.50



HALLS SILVER JUNIPER A new grafted variety. Its natural growth is pyramidal and upright...it needs practically no shearing. It has a dense, soft silver-blue whipcord type foliage which does not fade in the winter.

3½ to 4 feet....\$12.00 4 to 4½ feet....\$15.00

KANSAS SILVER JUNIPER A very compact upright growing tree with attractive silvery blue-green foliage. Holds its compact, narrow, pyramidal, pointed shape with little or no shearing. A very choice variety.

2 to 2½ feet....\$7.00 2½ to 3 feet....\$8.50
3 to 3½ feet....\$10.00

PATHFINDER JUNIPER An outstanding variety by reason of its iridescent silver-blue foliage. Upright in growth and very hardy.

2 to 2½ feet....\$7.00 2½ to 3 feet....\$8.50
3 to 3½ feet....\$10.00

SCOPULORUM JUNIPER (COLORADO SILVER) This variety has finely textured foliage and a beautiful silver-green color. Very similar to the habit of growth of Redcedar; however they usually grow a little slower and more compact. An excellent variety for Western Kansas.

2 to 2½ feet....\$4.00 3 to 3½ feet....\$6.00
2½ to 3 feet....\$5.00 3½ to 4 feet....\$7.00

SPREADING EVERGREENS



PFITZERS JUNIPER The most popular spreading evergreen. Beautiful foliage and plume-like shape. Most versatile of all evergreens.

12 to 18 ins....\$3.75 24 to 30 ins....\$5.75
18 to 24 ins....\$4.75 30 to 36 ins....\$6.75
3 to 4 feet....\$8.00

GOLDEN PFITZER Same shape and habit as the Pfitzers Juniper, except the ends of the stems are a rich golden color.

12 to 18 ins....\$3.75 24 to 30 ins....\$5.75
18 to 24 ins....\$4.75 30 to 36 ins....\$6.75

COMPACT PFITZER A little more dwarf and considerably more dense and compact than the regular Pfitzers Juniper. Finely textured foliage of a bright grey-green color. Quite novel.

12 to 18 ins....\$4.00 18 to 24 ins....\$5.00
24 to 30 ins....\$6.00

SAVIN JUNIPER A spreading evergreen that grows more upright than the Pfitzers Juniper. A very hardy and artistic evergreen.

12 to 18 ins....\$4.75 18 to 24 ins....\$5.75
24 to 30 ins....\$6.75

TAMARIX SAVIN JUNIPER One of the most beautiful of spreading Junipers. Very fine and plume-like foliage. Grows about one-half the height of the Pfitzers Juniper.

12 to 18 ins....\$5.00 18 to 24 ins....\$6.00
24 to 30 ins....\$7.00

GLOBE SAVIN JUNIPER This is the Savin Juniper sheared into a globe shape.

12 to 15 ins....\$5.00 15 to 18 ins....\$6.00

ANDORRA JUNIPER A spreading evergreen with beautifully textured foliage. Much lower in growth than the Pfitzers Juniper.

12 to 18 ins....\$3.75 24 to 30 ins....\$5.75
18 to 24 ins....\$4.75 30 to 36 ins....\$6.75
3 to 4 feet....\$8.00

SALINA BLUE SCOPULORUM A new dwarf spreading evergreen. Growth and texture of foliage is very similar to the Pfitzers Juniper but the color is frosty silver-blue. Very striking.

18 to 24 ins....\$5.00 24 to 30 ins....\$6.00
30 to 36 ins....\$7.00

SILVERSTAR JUNIPER (SCOPULORUM). A low spreading form of the Colorado Silver Juniper. Attractive silvery-blue. OUR OWN ORIGINATION! You cannot buy this variety elsewhere.

12 to 18 ins....\$4.75 18 to 24 ins....\$5.75
3 to 4 feet....\$9.00

ARBORVITAE

CHINESE ARBORVITAE Hardy upright evergreen that can be sheared into nearly any shape. Bright green, lace-like, "ironed-out" foliage.

2 to 2½ feet....\$2.50 3 to 3½ feet....\$3.50
2½ to 3 feet....\$3.00 3½ to 4 feet....\$4.00
4 to 4½ feet....\$4.50

EXCELSA ARBORVITAE Similar to the Berckmanns Golden, but the color is emerald green and its shape more pointed and pyramidal.

24 to 30 ins....\$4.00 30 to 36 ins....\$5.00
36 to 42 ins....\$6.50

BERCKMANN'S GOLDEN ARBORVITAE Dwarf, compact, and ornamental. Bright, golden-green "ironed-out" foliage. It is without a doubt one of the most strikingly beautiful of all evergreens. Its dwarf and compact habit of growth and color make it extremely valuable in landscaping.

15 to 18 ins....\$3.00
18 to 24 ins....\$4.00
24 to 30 ins....\$5.00
30 to 36 ins....\$6.00

GOLD COMPACT ARBORVITAE Very similar in shape and color to the Berckmanns Golden Arborvitae, except that they are not as uniform in their color and shape. Exceptionally hardy.

12 to 18 ins....\$2.50 18 to 24 ins....\$3.50
24 to 30 ins....\$4.50

GREEN COMPACT ARBORVITAE This is an attractive dense and compact tree with bright green foliage. Shape is oval upright. Valuable in landscape work and foundation plantings.

15 to 18 ins....\$2.25 18 to 24 ins....\$3.00
24 to 30 ins....\$3.75

GREEN GLOBE ARBORVITAE A natural growing globe selection. Dwarf and fine textured. Color is a beautiful bright emerald-green. An excellent specimen for general landscape work and foundation plantings.

12 to 15 ins....\$3.25 15 to 18 ins....\$4.25
18 to 24 ins....\$5.25

SINGLESTEM ARBORVITAE Our own selection of the hardy Chinese Arborvitae that develops only one central leader. It requires no shearing. A naturally tall and slender grower.

3 to 3½ feet....\$6.00 4 to 4½ feet....\$8.00
3½ to 4 feet....\$7.00 4½ to 5 feet....\$9.00

The KANSAS LANDSCAPE & NURSERY CO. offers

Genuine Imported HOLLAND BULBS



TULIPS Here you will find listed one of the best assortments of genuine imported Holland Bulbs available. These are top-size, high quality bulbs; the kind that will really give results next spring. If you are looking for quality and results, you will find none better.

TULIP PRICES (Postpaid)

DARWIN, COTTAGE, BREEDER and TRIUMPH TULIPS—
6 for 90c; 12 for \$1.50; 25 for \$2.75; 100 for \$10.00.

PARROT, SINGLE EARLY, AND DOUBLE TULIPS—
6 for \$1.15; 12 for \$2.00; 25 for \$3.75; 100 for \$12.50.

DARWIN TULIPS

Campfire. A lovely, tall, showy tulip of a brilliant blood red color. Excellent for bedding and for cut flowers.

City of Haarlem. Very beautiful and distinctive tulip. One of the best and probably the leading Darwin tulip. Rich deep scarlet with a blue base.

Farncombe Sanders. Another fine bedding Darwin tulip. Color lends itself to landscaping use with evergreens and shrubs. Fiery rose-scarlet. Large perfect flowers on tall stems. See picture on next page.

Insurpassable. A mammoth lilac tulip; flower is of great substance and carried on a tall and strong stem.

La Tulipe Noire. The blackest of all tulips. Very large, beautiful, unique flowers. Soft velvety black.

Princess Elizabeth (Same as Julie Virnot). Vivid deep rose, large flowers. Fine for massing in formal beds.

Prunus. An unusual color of salmon-pink with lighter edge. Grows 24 inches high and is one of the best Darwins.

HYACINTHS

Most in demand of all flower bulbs. For best results, plant hyacinths in a bulb garden. In five distinct color ranges.

Prices on all varieties listed, postpaid: 3 for \$1.00; 6 for \$1.85; 12 for \$3.50; 50 for \$13.00.

City of Haarlem. A bright golden yellow. Best yellow hyacinth for bedding. Fine compact blooms.

King of the Blues. Very large dark blue spikes of beautifully curved bells. Most popular blue.

La Victorie. A brilliant carmine-rose hyacinth. An unsurpassed variety. Early.

L'Innocence. The most popular of all white hyacinths. Broad loose spikes of very large pure white bells. An excellent bedder.

Queen of the Pinks. One of the best pink varieties in cultivation. Enormous compact spikes of lovely bright rosy pink.

GRAPE HYACINTHS (Muscari)

Once planted they are permanent and come back every spring. Flower in March and April. Excellent for naturalizing and also for the rock garden. Fine for cutting. See picture on next page. Deep blue.

Prices: 6 for 35c; 12 for 65c; 25 for \$1.25; 50 for \$2.00. Postpaid.

SCILLA

(Scilla Siberica). Very beautiful and popular little spring flowers. They are very hardy and fine for naturalizing in wild gardens, at edge of borders or under shade trees. Flowers are a deep sky blue and three on a stem.

Prices: 6 for 45c; 12 for 85c; 25 for \$1.50; 50 for \$2.50. Postpaid.

COTTAGE TULIPS

Advance. The most outstanding tulip in this class. Taller than most cottage varieties. 24 inches, strong stems. Fiery salmon-red with a bluish reflection.

Golden Harvest. Large glossy golden yellow flowers. Perfect flowers on long stems.

Wall Street. A delightful shade of lemon yellow. This variety can be forced.

TRIUMPH TULIPS

Elizabeth Evers. Enormously large, beautiful pink flowers on strong stems. One of the best pink tulips in existence. Fine for bedding.

Kansas. The best snow-white Triumph tulip. Lemon yellow center. Strong and erect.

Picadilly. A very unusual tulip. Bright red with the petal edged with white. Large.

BREEDER TULIPS

Louis XIV. Outstanding among the Breeders. A great tulip. Dark purple flushed with bronze, purple inside.

Bacchus. Outstanding novelty in the Breeder section. Dark plum color. Large oval-shaped flowers, rich outer petals.

CHIOIODOXA

(Glory-of-the-Snow). (See picture on page 5.) Very early, flowering in February and March. They are very hardy and once planted need no further attention and actually increase in size of blossoms year after year. Fine for naturalizing, planting in rock gardens, under shrubs, or scattering through the border. **Price:** Same as for Grape Hyacinths.

CROCUS

(See picture on next page.) Among the prettiest and most popular early spring flowers. Excellent for massing to get profusion of bloom. If planted 2 or 3 inches apart they will soon fill out the whole plot. Can be planted anywhere and need very little care, coming back year after year. Effectively planted in lawns and for edging the border. Very hardy. Mix the colors for naturalization. We offer four delightful colors: Purple, Yellow, Blue with White Stripes, Pure White. **Postpaid Prices: 6 for 35c; 12 for 65c; 25 for \$1.25; 50 for \$2.00.**

SNOWDROPS

(See picture on next page.) Nothing is so charming as a large grouping of snowy white Galanthus blossoms in the earliest days of spring. These are best planted in masses and in a partially shady situation. Very vigorous in habit. **Prices: 6 for 50c; 12 for 85c; 25 for \$1.55; 50 for \$2.50. Postpaid.**

DUTCH IRIS

(Holland Grown). These so-called "poor man's orchid," as they are called in England, should be in every garden. They bloom in May and June and extend the Iris season. Bulbs multiply rapidly. Fine for planting with perennials and for general border use. Cut flowers stand a lot of handling and last a week or longer. We offer three varieties:

Golden Harvest. A golden yellow.

H. C. Van Vliet. A deep blue.

White Excelsior. Pure white.

Postpaid prices for large blooming size bulbs: 3 for 50c; 6 for 75c; 12 for \$1.25; 25 for \$2.25.

SINGLE EARLY TULIPS

Keizerskroon. One of the largest flowers of early tulips. Bright red with golden yellow border. Very popular, robust grower.

DOUBLE TULIPS

Electra. Large and unique double flowers. Beautiful deep cherry red. Early.

Eros. Rich old rose in color. A distinctive double tulip. Late.

Peach Blossoms. Satiny deep rose. Striking double flowers. Early.

PARROT TULIPS

Novelty tulips with petals deeply lacinated, giving a ragged novel appearance.

Blue Parrot. Very large flowers of bluish heliotrope. An outstanding novelty.

Fantasy. Most popular Parrot tulip. A sport of Clara Butt. Fine flowering of enormous size on stiff stems. Soft rose with green streaks. Inside salmon rose.

The New Fosteriana Tulip... RED EMPEROR

Long, oval shaped flowers of vivid, lively scarlet with a yellow base. The flowers are so large and color so brilliant that they attract attention from a great distance. **Postpaid prices: 6 for \$1.15; 12 for \$2.00; 25 for \$3.75; 100 for \$12.50.**

DAFFODILS

(See picture on next page.)

Prices on all varieties, postpaid: 3 for 55c; 6 for \$1.00; \$1.90 per dozen; 50 for \$7.25; 100 for \$14.00.

Carlton (incomparabilis). A large fine flower with sulfur-yellow perianth and a clear yellow cup.

Emperor (Yellow Trumpets). Dark yellow trumpet, and perianth primrose. An excellent bedding daffodil. A fine old variety of merit and probably the best garden daffodil.

Inglescombe. A double Daffodil of pure rich yellow resembling a double yellow Peony. Striking.

John Evelyn (White Perianth Incomparabilis). (Possibly a bicolor.) Outstanding international favorite among the new Incomparabilis hybrids. Perianth 4-5 inches across, with a flat cup, nearly 2 inches in diameter. Perianth pure white and cup lemon yellow. Good naturalizer.

King Alfred (Yellow Trumpets). One of the finest of all daffodils, and the leading yellow trumpets. Rich, lustrous, golden yellow throughout. Extremely vigorous.

Mrs. Ernst H. Krelage (White Trumpets). Almost a pale bicolor but changing to a uniform ivory white. One of the largest and finest of all white trumpets.

Spring Glory (Bicolor Trumpets). Becoming the leading bicolor. Pure white perianth and deep golden trumpet recurved at the mouth. Heavy free-blooming. Good for naturalizing.

PAPER WHITE NARCISSUS BULBS FOR PLANTING INDOORS IN PEBBLES AND WATER

See Page 4

Narcissus for forcing in water

PAPER WHITE GRANDIFLORA

These are the popular bunch-flowering, pure white narcissus. They will produce 25 to 30 individual blooms from each bulb. These are the easiest bulbs to force and can be brought into bloom for Christmas.

DIRECTIONS FOR FORCING: Place the bulbs in a container and fill with sand, gravel, peat moss, or similar material to about one-half way up on the bulbs. Place the container with the bulbs in a cool, dark place until root growth is quite evident. Add water as needed. After sufficient root growth is attained, the container and bulbs should be placed in a light, sunny window. The bulbs will come into flower within a few weeks.

PRICES:

3 for 40c; 12 for \$1.25

*See the Mixed Tulip
Special on the
Outside
Cover!*



INSURPASSABLE



Our Colorful
TULIP COLLECTION

A. 10 each of the five Tulip varieties illustrated. Top size bulbs. 50 outstanding Tulips for only **\$5.00**

B. 20 each of the five Tulip varieties illustrated. Top size bulbs. 100 outstanding Tulips for only **\$9.50**



FARNCOMBE SANDERS



GALANTHUS (Snowdrops)



NARCISSUS—KING ALFRED



CROCUS



BELOW—MUSCARI GRAPE HYACINTHS



SEE COMPLETE BULB LIST AND DESCRIPTIONS, PAGE 3.

KANSAS LANDSCAPE & NURSERY CO.

Genuine Imported

HOLLAND BULBS

Our bulbs are *Topsized* grade, not to be confused with the smaller bedding varieties. They will produce large flowers the first season.



GOLDEN HARVEST

DAFFODIL SPECIAL

A mixture of the yellow and white varieties. All are top quality bulbs.

PRICES:

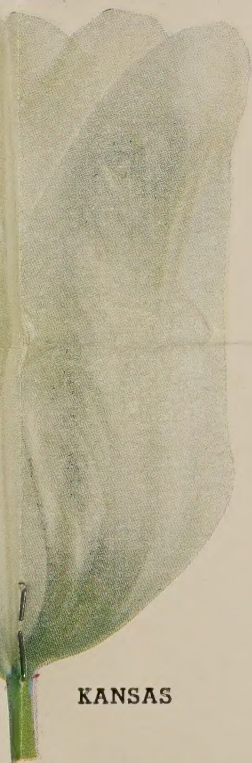
25	for.....	\$3.75
50	for.....	\$6.50
100	for.....	\$12.00



CHIONODOXA
(Glory of the Snow)



CAMPFIRE



KANSAS



HYACINTHS



NARCISSUS—SPRING GLORY



SEE COMPLETE BULB LIST AND DESCRIPTIONS, PAGE 3.

Salina-Grown

HARDY PERENNIALS



HARDY PHLOX

PRICE
POSTPAID:
45c each;
4 for \$1.50.

- Chieftain.** Clear ruby red without shadings. Unusual and outstanding.
- Colonial.** Extra large lavender blue. A tall grower.
- Daily Sketch.** Large trusses of soft salmon pink. A robust grower.
- Eclairer.** A rich lavender-purple. A strong grower and very hardy.
- Flash.** New. Large rosy red trusses. Hardy and sturdy.
- Mrs. Jenkins.** Pure waxy white. Fast growing and vigorous.
- R. P. Struthers.** Bright cerise with claret eye. Showiest and hardiest.

SPECIAL . . 6 PHLOX for \$2.00

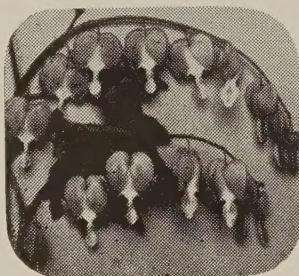
We select for you six plants from the seven listed. All different. Not labeled. Postpaid.

BABYS BREATH, "Bristol Fairy." The large double (grafted) form of Babysbreath so valuable in bouquets of roses or other flowers. Can be dried for winter bouquets. Price, \$1.00 each, postpaid.

PEONIES for Fall Planting

FALL IS THE BEST TIME TO PLANT PEONIES. We have found the following double varieties best adapted to this section:

- Edulis Superba.** Beautiful flowers of clear pink. Early. 80c each.
- Felix Crousse.** Large blooms of brilliant ruby-red. Midseason. 80c each.
- Festiva Maxima.** Pure white with crimson markings in center. Early. 90c each.
- Karl Rosenfield.** Dark velvety red. Midseason. 80c each.
- Officinalis Rubra.** Large double deep red. One of the earliest. \$1.50 each.



OLD-FASHIONED BLEEDING HEART

FALL IS THE BEST TIME to plant this grand old perennial.

Lasts a lifetime in one location. Pink flowers in May. \$1.00 each, postpaid.

DELPHINIUM. Another popular perennial easily planted in the fall. We offer the only two varieties we have found suitable and easy to grow for this section.

- Belladonna.** Light turquoise blue.
 - Bellamosum.** Dark blue with a white bee.
- Prices: 40c each; 3 for \$1.00; 12 for \$3.50; postpaid.



ORIENTAL POPPIES

Few perennials create a more sensational show than do Oriental Poppies. EARLY FALL IS THE ONLY TIME THEY CAN BE TRANSPLANTED. They are easy to grow, once established, and last for years in one location. Plant in open location. Prices are postpaid.

- Cerise Beauty.** Crinkly cerise flowers. A profuse bloomer. An excellent poppy. 65c each; 3 for \$1.65.
- Henry Cayeaux.** Big blooms of an old rose color shaded with burgundy. 65c each.
- Joyce.** An abundance of charming soft red flowers. One of best garden varieties. 75c each; 3 for \$2.00.
- Mrs. Perry.** Large apricot orange flower. Petals marked with a mahogany blotch. 65c each; 3 for \$1.65.
- Oriente.** Scarlet-crimson, black spots at base of petals. Vivid and showy. 40c each; 3 for \$1.00; 10 for \$3.00.

HEMEROCALLIS Improved Daylilies

New improved varieties are making this extremely hardy old fashioned perennial increasingly popular.

- August Pioneer.** Blooms are orange with a reddish flush. A profuse bloomer. 45c each.
- Hyperion.** Flowers are citron-yellow and delightfully fragrant. Many consider it the finest yellow Daylily available. Very prolific. \$1.00 each.
- Kwanza.** A fine double variety. Large attractive orange-yellow blooms. 40c each.
- Mrs. W. H. Wyman.** Lovely light pale lemon-yellow flowers. Very free flowering and late blooming. 60c each.
- Margaret Perry.** A striking bronze-red bloom with a golden yellow center. A prize for your garden. 90c each.

LILIES

Madonna Lily. Pure waxy white. Blooms in May and June. Must be planted between August 15 and September 15. Prefers poor soil and will grow in partial shade. Large Bulbs, 65c each; 4 for \$2.00.

Regal Lily. Pearly white, pink tinged, and with a golden throat. Blooms in June and July. Hardy and easy to grow. Large Bulbs, 55c each; 3 for \$1.50, postpaid.

Double Tiger Lily. A double form of this old-fashioned lily. About the only double lily in existence. Rich salmon orange spotted with black. 40c each; 3 for \$1.00, postpaid.

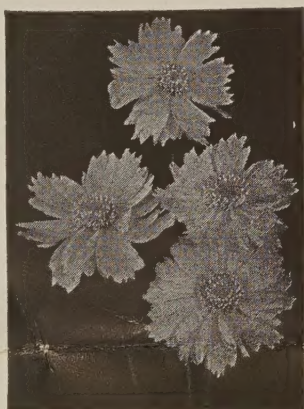
SURPRISE LILY (Lycoris squamigera). Also called "Hardy Amaryllis." Produces attractive green foliage in early spring which grows until July and then completely disappears. About a month later, as if by magic, the flower stalks spring from the ground without foliage to a height of 2 to 3 feet, bearing delicate pink lily-like flowers, 8 to 12 in number. The bulb is perfectly hardy. Cover crown about 4 inches in planting. Price: \$1.15 each; 3 for \$3.00.

COLUMBINE

Although Columbine may be planted in either fall or spring, we believe that fall planting is the best. We offer the following 3 varieties. Price: 40c each; 3 for \$1.00, postpaid.



- Mrs. Scott Elliott.** Long spurred flowers of beautiful pastel shades in mixed colors.
- Long Spurred Blue.** Shades of blue.
- Silver Queen.** Large, long spurred flowers of rich silvery white.



COREOPSIS



SHASTA DAISY, ALASKA



GAILLARDIA

MISCELLANEOUS PERENNIALS

Space here does not permit us to describe all of the perennials that can be planted in the fall. The following is a list of perennials available for fall planting. For descriptions refer to our spring catalog we mailed to you last spring.

PRICES of the following list: 40c each; 3 (of one kind) for \$1.00; 12 (of one kind) for \$3.50. Postpaid.

- | | | |
|-----------------------|--------------------------|---------------------------|
| Alyssum saxatile | Centaurea Montana | Linum Perenne |
| Achillea, the Pearl | Centaurea Macrocephala | Lobelia Cardinalis |
| Anchusa | Cerastium Tomentosum | Lychnis Chalcedonica |
| Anthemis Kelwayi | Cheiranthus Allioni | Phlox subulata |
| Asclepias tuberosa | Coreopsis | Phlox divaricata |
| Babysbreath | Marguerite Daisy (Early) | Pinks, Hardy |
| Double Snow White | Shasta Daisy, Alaska | Platycodon, Blue |
| Oldhamiana | Echinops Ritro | Platycodon, Pink |
| Pacifica | Feverfew | Physostegia |
| Old-fashioned single | Gaillardia, Burgundy | Pyrethrum (Painted Daisy) |
| Baptisia australis | Gaillardia, Goblin | Rudbeckia purpurea |
| Blue Plantain Lily | Golden Glow | Sweet Peas, Hardy |
| Carnation, Flame King | Heliopsis, Lemoine | Velariana |
| Callirhoe Involucrata | Iris | Violets, Sweet |
| Centaurea Dealbata | Lily-of-Valley | Vinca, Minor |

REMEMBER—Fall blooming perennials such as Hardy Asters and Chrysanthemums are best planted in the spring. We invite you to visit our display of Hardy Chrysanthemums when they are in bloom this fall.

Roses . . . for fall



BLOOMING PLANTS IN SPECIAL REMOVABLE CONTAINERS...CAN BE PLANTED ANYTIME WITHOUT SETBACK OR LOSS.

Since it is impossible to plant dormant roses in the fall, due to our rigorous winters, we have planted a large number of roses in these special removable containers. This way, you can plant a beautiful, blooming rose in full leaf during the summer or fall.

Since each plant and pot weigh approximately 12 pounds, they are very difficult to ship. So you should drive in, pick out the roses first hand, and take them away in your car. When you see them in bloom, you can be sure of getting just the variety and color you want.

MAIL ORDERS: If you find it impossible to come to our nursery, we will ship by express or truck. In order to ship, these plants must be crated. To cover the expense of crating, add 75¢ to the cost of the plants for one to four roses, and \$1.50 for five to eight roses.

PATENTED HYBRID TEAS

Capistrano.....each	\$3.00
Diamond Jubilee.....each	\$2.50
Mirandy.....each	\$2.00
Mission Bells.....each	\$3.00
New Yorker.....each	\$2.50
Peace.....each	\$2.50
Sutters Gold.....each	\$3.00

STANDARD HYBRID TEAS

RED	
Ami Quinard.....each	\$1.50
Etoile de Hollande.....each	\$1.50
Gruss an Teplitz.....each	\$1.50
Margaret McGredy.....each	\$1.50
Red Radiance.....each	\$1.50

YELLOW

Golden Rapture.....each	\$1.50
Mrs. E. P. Thom.....each	\$1.50
Mrs. P. S. DuPont.....each	\$1.50
Sister Therese.....each	\$1.50

MULTICOLOR

Condessa de Sagtogo.....	\$1.50
Duquesa de Penaranda.....	\$1.50
Mms. Edouard Herriot.....	\$1.50
President Hoover.....each	\$1.50
Talisman.....each	\$1.50

PINK

Dame Edith Helen.....each	\$1.50
Editor McFarland.....each	\$1.50
Picture.....each	\$1.50
Pink Dawn.....each	\$1.50
Pink Radiance.....each	\$1.50

FLORIBUNDAS

Fashion.....each	\$2.50
Chatillion.....each	\$1.50
Floradora.....each	\$1.50

WHITE

Caledonia.....each	\$1.50
Kaiserin A. Viktoria.....	\$1.50
Mme. Jules Bouche.....each	\$1.50

ORNAMENTALS for immediate effect

TREES, SHRUBS AND VINES IN SPECIAL REMOVABLE CONTAINERS



Like our potted roses, we have planted these ornamentals in special removable containers. These plants are excellent for late summer and fall planting, for they give immediate landscape effect; that is, they are in full leaf. Planting is quick, easy and simple.

MAIL ORDERS: The ornamental trees cannot be shipped, but the shrubs and vines can be crated and sent out by express or truck. To cover the expense of crating, add 75¢ to the cost for one to four plants and \$1.50 for five to eight plants.

COLORFUL SHRUBS

Shrubalthea.....	\$1.30
Green Barberry.....	\$1.20
Red Barberry.....	\$1.35
Beautybush.....	\$1.35
Red Dogwood.....	\$1.25
Forsythia, Spring Glory.....	\$1.35
Honeysuckle, grandiflora rosea.....	\$1.25
Rothomagensis Lilac.....	\$1.25
Pussywillow.....	\$1.15
Flowering Quince.....	\$1.25
Snowball.....	\$1.65
Spirea froebeli.....	\$1.10
Spirea unifolia.....	\$1.50
Weigela, Bristol Ruby.....	\$2.00
Weigela rosea.....	\$1.35

HARDY VINES

Honeysuckle, Goldflame.....	\$1.35
Honeysuckle, Halls Purple Leaf.....	\$1.10
Boston Ivy.....	\$1.10
Silver Lace Vine.....	\$1.25

ORNAMENTAL TREES

Hopa Flowering Crab.....	\$2.75
Hawthorn.....	\$2.75
Red Leaf Peach.....	\$2.50
Red Flowering Peach.....	\$2.50
Purple Leaf Plum, Cistina.....	\$3.00
Purple Leaf Plum, Newport.....	\$3.50
Purple Leaf Plum, Thundercloud.....	\$3.50

GARDEN URNS

MAIL ORDERS: Please add 75¢ to the cost of each model for special packing and crating.



LUXOR URN

This beautiful urn has the same grey olive-green brushed finish as the No. 8 Luxor birdbath. 14 inches high, 14 inches in diameter.

PRICE AT THE NURSERY
Each.....\$6.00



ROMAN JAR

A fine-textured, pure white finish. 10 inches high, 12 inches in diameter.

PRICE AT THE NURSERY
Each.....\$3.00



NO. 8 BISQUE

This is a fine, high quality birdbath in "Bisque" (light tan or beige) finish. Weight, 29 pounds. 17½ inches in diameter, 23½ inches tall. Our lowest priced birdbath.

PRICE.....AT OUR NURSERY
Each.....\$3.90

the famous CROWN POTTERY BIRDBATHS

A birdbath is considered one of the finest landscape features in the informal garden. It can also be used as an intermediate or terminal feature in a formal garden.

MAIL ORDERS: Please add 75¢ to the cost of each model for special crating and packing.



NO. 8 LUXOR

The same model as No. 8 "Bisque" in "Luxor" finish. This is a light grey olive-green brushed over the "Bisque" with some of the Bisque showing through, giving it an artistic antique finish.

PRICE.....AT OUR NURSERY
Each.....\$4.25

NO. 16 GREYSTONE

This beautiful model is our largest birdbath. Artistic "Greystone" finish will add grace and charm to your lawn or garden. Weight, 30 pounds. 18 inch diameter. 27 inches tall.

PRICE.....AT OUR NURSERY
Each.....\$7.50

NO. 15 BISQUE

This artistic model is slightly taller than No. 8 Bisque. Weighs 33 lbs. The color is "Bisque" or light tan. A valuable addition to your lawn or garden. 17½ inch diameter, 24½ inches tall.

PRICE.....AT OUR NURSERY
Each.....\$4.10

for fall planting PERENNIAL SEEDS



Listed here are almost all of the hardy varieties of perennials adapted to our great plains region which may be seeded in the fall. These seeds will germinate this fall and produce plants to carry over the winter. Then you will be assured of many early blooms next spring at the perennial's proper blooming time. Full instructions are given on the seed packet.

MAIL ORDERS: Orders over \$1.00 are postpaid; under \$1.00, add 2¢ per packet for postage.

ALYSSUM, Gold dust.....	15¢	CANTERBURY BELLS, All colors..	10¢
ARABIS, Rock cress, white.....	10¢	CANTERBURY BELLS, Cup and saucer, all colors.....	15¢
CANDYTUFT, Rose lavender.....	10¢	CARNATION, Chabauds giants, all colors.....	15¢
BALLOON FLOWER, Deep blue.....	10¢		

COLUMBINE, Mrs. Scott Elliott.....	15¢	LUPINE, Russell, all colors.....	15¢
COREOPSIS, Double sunburst.....	15¢	PANSY, All colors.....	15¢
ENGLISH DAISY, Pink and white.....	15¢	PANSY, Special mixed giants.....	25¢
PAINTED DAISY, Pyrethrum, all colors.....	15¢	PINKS, Clove, all colors.....	10¢
SHASTA DAISY.....	15¢	PINKS, All colors.....	10¢
DELPHINIUM, Chinese dwarf.....	10¢	PEACHBELLS, Bellflower.....	15¢
DELPHINIUM, Shades of blue.....	15¢	POPPY, Iceland single, all colors..	15¢
DIANTHUS, Pinks, all colors.....	15¢	POPPY, Oriental scarlet.....	15¢
FLAX, Blue.....	15¢	SNAPDRAGON, Rust-proof, all colors.....	15¢
FORGET-ME-NOT, Myosotis.....	15¢	SNAPDRAGON, Giant buttercup.....	15¢
FOXGLOVE, Digitalis, all colors....	10¢	SNAPDRAGON, Giant red fire.....	15¢
GAILLARDIA, All colors.....	10¢	SNAPDRAGON, Giant rose pink.....	15¢
GYPSOPHILA, Babysbreath.....	10¢	SNAPDRAGON, Magic carpet miniature, all colors.....	20¢
HOLLYHOCK, Finest double, all colors.....	10¢	SNOW-IN-SUMMER, Cerastium.....	10¢
JERUSALEM CROSS, Lychnis, scarlet lightning.....	10¢	SWEET WILLIAM, All colors.....	10¢
KUDZU VINE, (Jack-and-the-bean-stalk).....	15¢	VIOLA, Baby pansy, all colors.....	15¢
		WALL FLOWER, Siberian, all colors..	10¢

lawn & garden ... horticultural peatmoss supplies



MILORGANITE

MILORGANITE is a scientifically prepared NATURAL or ORGANIC plant food and not a chemical or synthetic product. For this reason, it is long-lasting and non-burning. It does not have the "shot-in-the-arm" effect with the "let-down" that follows. Its organic or humus properties tend to build up the physical condition of the soil. This is opposite with many chemical fertilizers. MILORGANITE is rich in long-lasting organic nitrogen, the most important element needed for healthy plant growth. Besides phosphorus and potassium, it contains liberal amounts of iron, magnesium and sulphur. Deficiency of these elements causes Chlorosis (sickly yellowing of the foliage of many plants including grass), a condition common to soils in this particular region. For these and many other reasons, we believe MILORGANITE is the best fertilizer for lawns, flowers, gardens, trees, and shrubs in the great plains region.

"MILORGANITE" for BETTER TURF	100 pound bag.....\$4.00
	50 pound bag.....\$2.35
	25 pound bag.....\$1.45

Valuable as a source of soil humus. Makes heavy soils more friable and workable. Helps light sandy soils hold moisture. Prevents soil from baking and cracking during hot weather. Peatmoss will hold approximately 18 times its weight in water. It pays to mix Peatmoss with the back-fill soil when planting evergreens, shrubs, trees, flowers and bulbs. It is almost indispensable in preparing soil for potting, porchboxes and flats. It is valuable as a mulch on lawns and gardens. In preparing a seed bed for turf planting, one-half to one inch of Horticultural Peatmoss worked into the top three inches of soil will give a seed bed which will retain moisture, permit fibrous root growth, quick germination of seeds and give you a thick, heavy growth of fine grass that will be very resistant to burning out during the summer or freezing out during the winter.



No. 2 bag, containing approximately 4 bushels.....\$3.75 each, not prepaid
 No. 3 bag, containing approximately 2 bushels.....\$2.00 each, not prepaid
 No. 6 bag, containing approximately 1/8 bushel.....75¢ each, not prepaid

RA-PID-GRO



This fertilizer comes in concentrated form and must be dissolved in water to complete the formula for a perfect plant food. Simply mix one teaspoon of Ra-Pid-Gro in a quart of water and it is ready to use. One pound of Ra-Pid-Gro makes 176 pounds of liquid plant food. It can be fed to plants by applying the liquid to the soil around the base or by spraying on the foliage. It also may be used as a dip in transplanting. For use on lawns, we have a special spray nozzle that attaches onto the end of your hose. The nozzle costs \$1.95 (mail orders; add 15¢ for packing and postage. This nozzle, however, is not necessary for ordinary garden use; all that is needed is a pail or jar of water to pour the Ra-Pid-Gro around the plants to be fertilized. Prices are postpaid.

2 oz. envelope.....25¢	2 pound can.....\$2.35
1 pound can.....\$1.25	5 pound can.....\$4.50

september is the best time to plant:

BLUEGRASS LAWNS

KENTUCKY BLUEGRASS
 The proper time to plant bluegrass seed in the fall is about September 10th to October 15th. It may be planted sooner in September if the weather cools off and the fall rains begin. However, as a general rule, planting is much safer after September 10th.

We recommend Fall Planting for bluegrass lawns for two reasons: in the fall, the bluegrass seed can germinate in the cool weather and develop without the competition of the noxious lawn weeds, as is often the case in the spring; also, fall seeding allows the tender, young grass to get well established before hot weather. This cannot be accomplished in the spring.

Our recommended rate for bluegrass is one pound for every 200 square feet of lawn area. HIGH QUALITY SEED: \$1.35 per pound; 5 pounds for \$6.50; 10 pounds for \$12.50 (not prepaid)

DUTCH WHITE LAWN CLOVER
 For best results with bluegrass lawns in this region, DUTCH WHITE LAWN CLOVER should be used with the bluegrass. This is usually accomplished before the sowing of the seed simply by mixing the seed together at the rate of one pound of clover to every five pounds of bluegrass.

DUTCH WHITE LAWN CLOVER mixed with bluegrass gives protection from the heat to the small bluegrass seedlings upon germination, as well as protecting the mature bluegrass plant in the established lawn. Clover is also an excellent protection against white grubs.

Price per pound (not prepaid).....\$1.75



KANSAS LANDSCAPE AND NURSERY CO. SALINA KANSAS

SEC. 34.66 P.L.&R.
 U.S. POSTAGE PAID
 PERMIT NO. 185
 SALINA KANSAS



Special TULIP BULB Mixture

A BLENDED MIXTURE OF LEADING VARIETIES IN A COMPLETE ASSORTMENT OF COLORS. IMPORTED HOLLAND BULBS. POSTPAID.

25 BULBS.....	\$2.00
50 BULBS.....	\$3.75
100 BULBS.....	\$7.00

Library
 U. S. Dept. Of Agr.
 Washington 25, D. C.

fall 1950 planting bulletin

POSTMASTER: IF NOT DELIVERED IN 15 DAYS, CHECK REASON IN SPACES BELOW. DO NOT USE HAND STAMP. RETURN POSTAGE GUARANTEED.

- | | |
|---|--|
| <input type="checkbox"/> MOVED....LEFT NO ADDRESS. | <input type="checkbox"/> REFUSED. |
| <input type="checkbox"/> RETURNED AT SENDER'S REQUEST. | <input type="checkbox"/> UNCLAIMED OR UNKNOWN. |
| <input type="checkbox"/> NO SUCH POSTOFFICE IN STATE NAMED. | <input type="checkbox"/> DECEASED. |

POSTMASTER: WHENEVER POSSIBLE, WHERE CATALOG IS A DUPLICATE, DO NOT DELIVER BUT RETURN TO SENDER.

CATALOG SAME AS _____ RETURN POSTAGE GUARANTEED.